

Interim Chief Executive

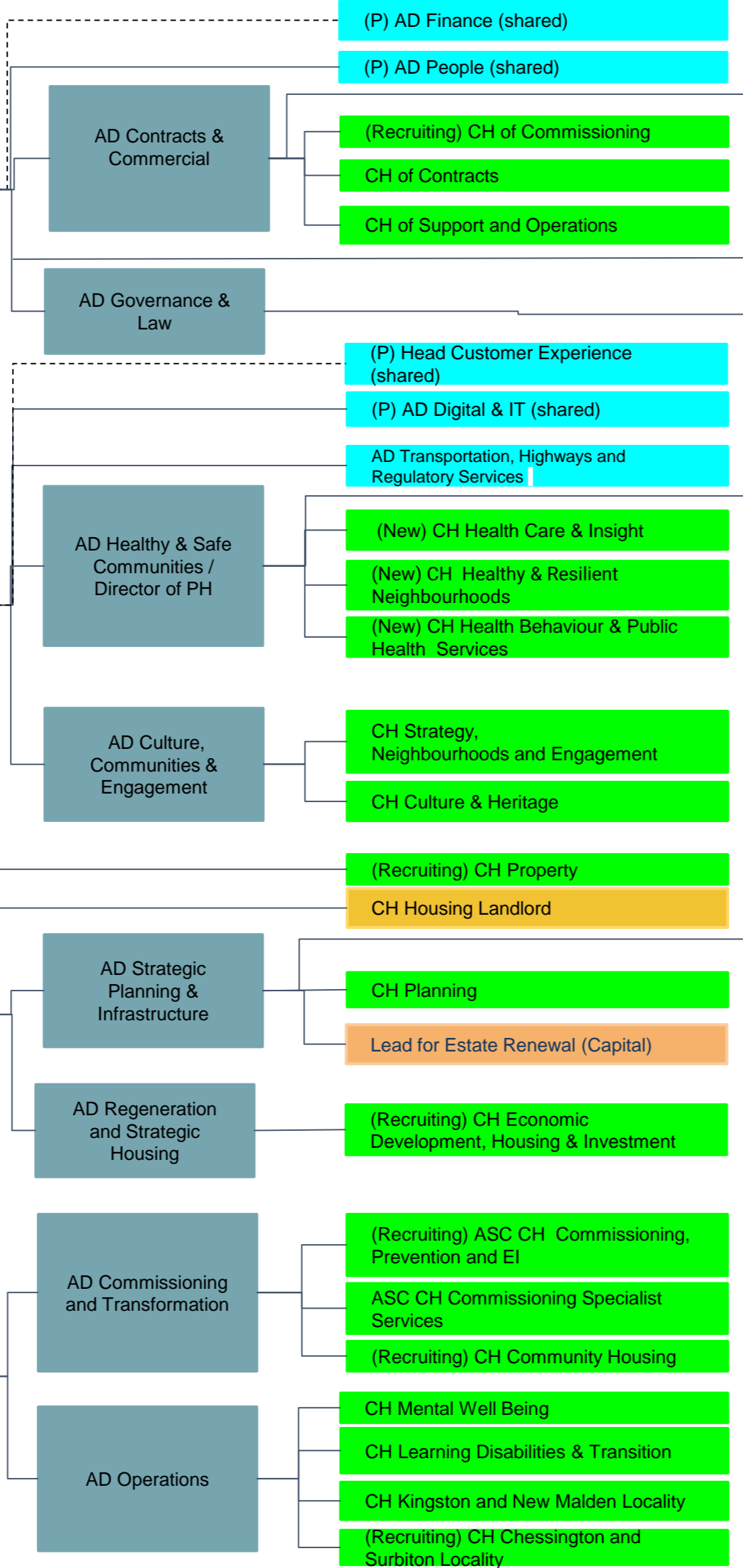
Director Children's Services / Deputy CE AfC

Director, Corporate & Commercial

Director of Communities

Director of Growth

Director, Adult Services



- Commercial Strategy
- Commissioning and Procurement
- Contract Management; Major contracts; Waste, Parking, Leisure & Green Spaces, Facilities
- Business Support , Revenue and Benefits,
- Corporate Transformation
- Legal, Audit, Anti-fraud, Mayoral office, Democratic Support and Electoral Service, Land Charges
- Customer Services & contact
- Highways and regulatory services
- Bereavement and Registration
- Data Insight, crime data, health data, mental well being, older people health care, PH and protection
- Community Safety, emergency planning, public health in all policies, social inclusion, Equalities & Community Engagement & development, vulnerable groups, community rangers
- Health Improvement & Social prescription, primary care development, substance misuse, sexual health, specialist & risky behaviour, nutritionist & health schools, workplace health, tobacco control & licensing, life style, get active
- Communications, engagement, partnerships, corporate strategy, performance and risk
- Cultural Strategy, Libraries, Heritage, Music, Arts
- Property
- Housing Operations, Repairs and maintenance
- Go Cycle
- Development Management and Building control, Enforcement, Majors, Design and Conservation, Strategic Planning
- Estate Renewal (Regeneration) CRE
- Strategic Housing, Development and Partnerships, Economic Growth,
- VCS, Maximising Independence, Carers, Information and Advice, Community Support
- Housing options,private sector schemes, welfare reform,temporary accommodation, resettlement
- Mental health service provision, Approved mental health service, Deprivation of Liberty , Carers Strategy, Direct payment , Step down to supported living
- Learning Disability Services, Young People in transition, Learning Disability Strategy, Step down to supported living
- Older people and Disability Services to South Locality, Safeguarding Lead role, Board Hospital discharge triage, single point of access , Brokerage
- Occupational Therapy and Equipment contract, Principal social worker lead role, Older People and disability services to North Locality, Learning Development, workforce, Practice continuing Health care